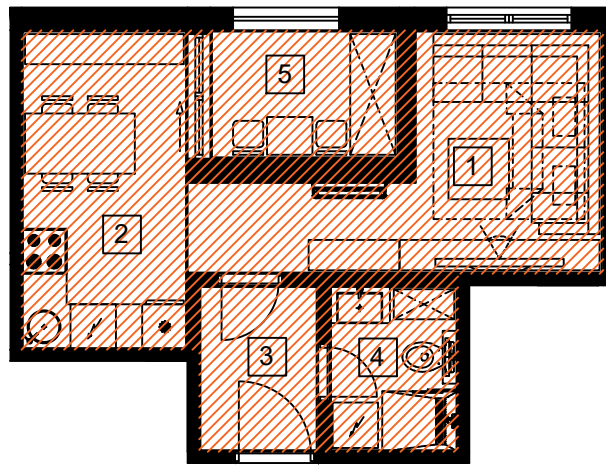


STAMBENA JEDINICA -S6-



▲
ULAZ

- S6 -	PROSTORIJA	P = neto m ²	OBRADA PODA
- 1 -	d. boravak	11,75 m ²	parket
- 2 -	kuhinja i bla.	9,30 m ²	parket
- 3 -	hodnik	3,45 m ²	ker. pločice
- 4 -	sanitarije	3,75 m ²	ker. pločice
- 5 -	lođa (0,75%)	3,20 m ²	ker. pločice
SVEUKUPNO:		neto m ² =	31,45 m ²