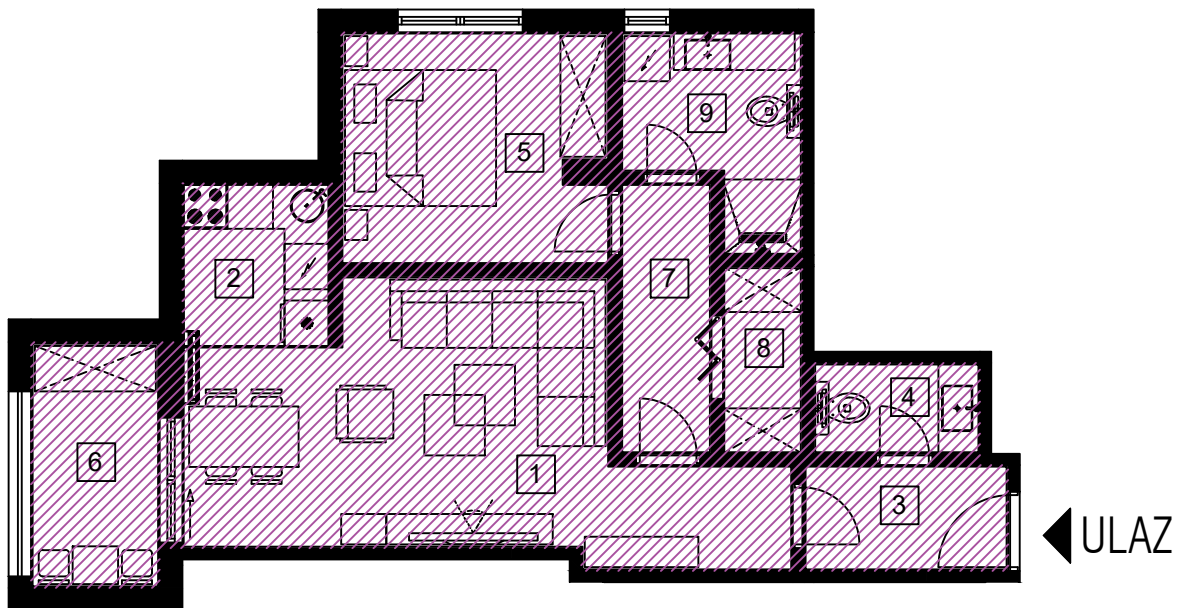


# STAMBENA JEDINICA -S5-



- S5 -	PROSTORIJA	P = neto m <sup>2</sup>	OBRADA PODA
- 1 -	dne. b. i bla.	21,90 m <sup>2</sup>	parket
- 2 -	kuhinja	4,20 m <sup>2</sup>	parket
- 3 -	hodnik	3,80 m <sup>2</sup>	ker. pločice
- 4 -	wc	2,65 m <sup>2</sup>	ker. pločice
- 5 -	soba	10,70 m <sup>2</sup>	parket
- 6 -	lođa (0,75%)	4,10 m <sup>2</sup>	ker. pločice
- 7 -	degažman	4,30 m <sup>2</sup>	parket
- 8 -	ostava	2,60 m <sup>2</sup>	parket
- 9 -	sanitarije	5,60 m <sup>2</sup>	ker. pločice
SVEUKUPNO:		neto m <sup>2</sup> =	59,85 m <sup>2</sup>