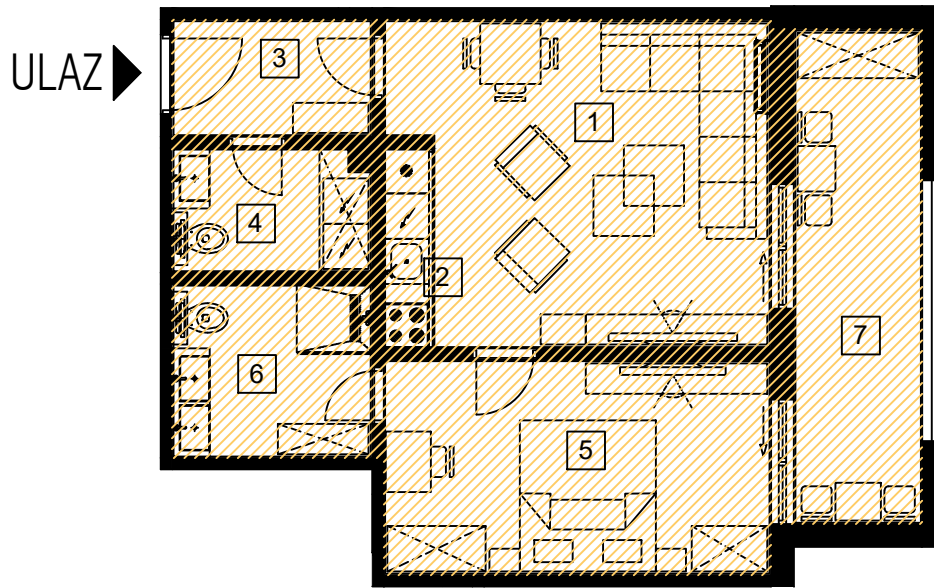


STAMBENA JEDINICA -S27-



- S27 -	PROSTORIJA	P = neto m ²	OBRADA PODA
- 1 -	dne. b. i bla.	20,50 m ²	parket
- 2 -	kuhinja	1,70 m ²	ker. pločice
- 3 -	hodnik	4,10 m ²	ker. pločice
- 4 -	wc	4,30 m ²	ker. pločice
- 5 -	soba	14,60 m ²	parket
- 6 -	sanitarije	6,00 m ²	ker. pločice
- 7 -	lođa (0,75%)	8,60 m ²	ker. pločice
SVEUKUPNO:		neto m ² =	59,80 m ²