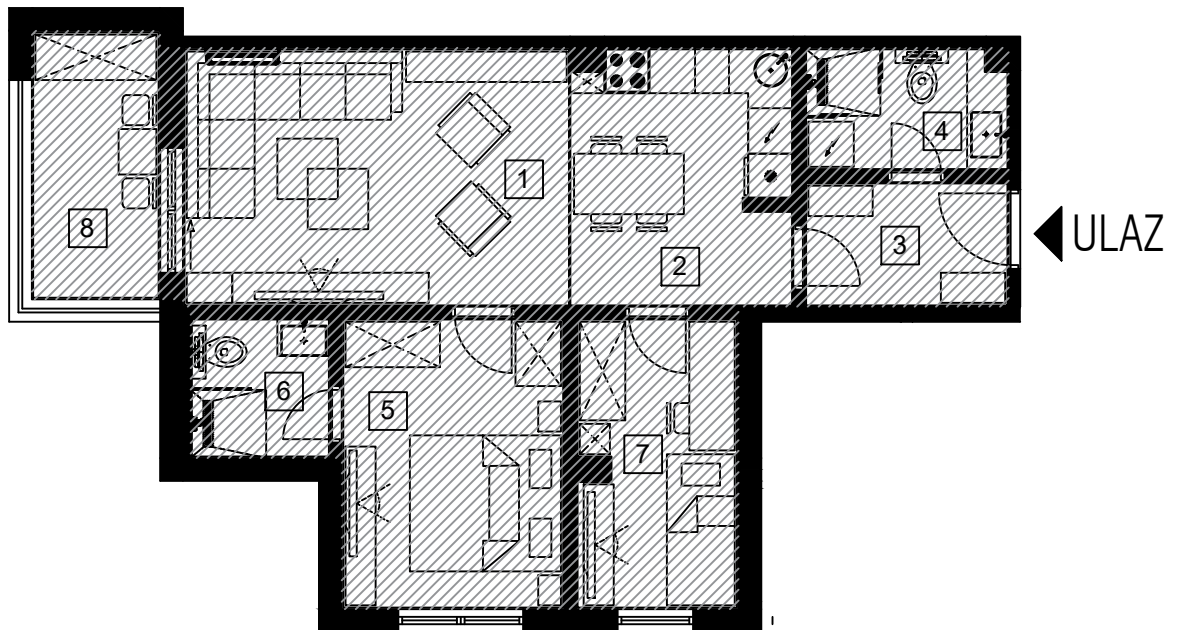


STAMBENA JEDINICA -S11-



- S11 -	PROSTORIJA	P = neto m ²	OBRADA PODA
- 1 -	d. boravak	17,55 m ²	parket
- 2 -	kuhinja i bla.	9,90 m ²	parket
- 3 -	hodnik	4,45 m ²	ker. pločice
- 4 -	sanitarije	4,30 m ²	ker. pločice
- 5 -	soba	11,35 m ²	parket
- 6 -	wc	3,60 m ²	ker. pločice
- 7 -	soba	8,15 m ²	parket
- 8 -	balkon	3,00 m ²	ker. pločice
SVEUKUPNO:		neto m ² =	62,30 m ²